

Marine Watertight Fluorescent Pendant Light with Polycarbonate diffuser 1055 series



Scope of Application:

This heavy duty luminaire is designed according to IEC60092-306-2009 and relevant rules of maritime classification societies accredited through CCS, Applicable for illumination of water-droplets, water-spattering, or dew-coagulating places on ships, such as the engine rooms, dry cabins, tunnels, pipeline route way and weather decks, etc. The working ambient temperature can be -20°C~55°C

Housing:


Formed by deep-drawn carbon-steel, or galvanized steel or Stainless Steel

Lamp Diffuser:

Polycarbonate injection lamp shade, with water-tight sealing structure

Wiring:

Complete inside pre-wiring


To prevent possible electric shock, a copper earthing-terminal marked with  is installed outside the fixtures


Ballast & Capacitor:

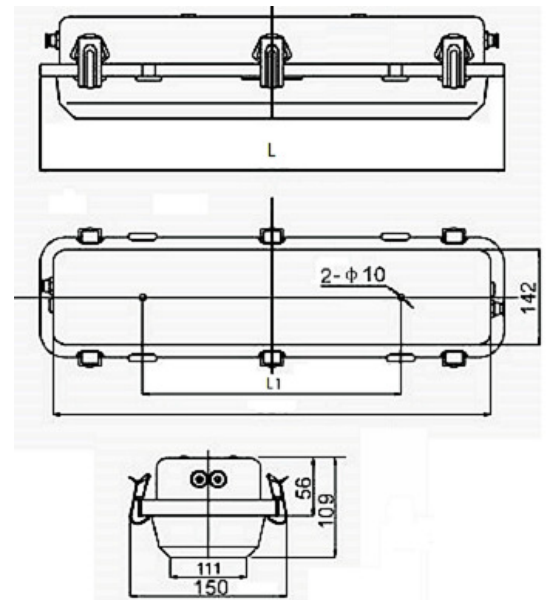
Equipped with a set of heavy duty magnetic ballasts and a compensating capacitor for reliable operation and rapid-start.

The electronic ballasts are also available at customer's option.

Emergency Lamp:

The light fittings with a  mark on the surface of PC shade are equipped with a Ba15d lamp holder for emergency bulbs of 24V 10W/15W. The emergency bulbs should be ordered separately

The light fittings with a  mark on the surface of PC shade are equipped with a battery, an automatic charging relay, and an emergency bulb of 24V 15W, this emergency bulb will automatically work for not less than 180minutes in case of main power-supply failure.



Specifications:

Model	Capacity	Power Supply	Emer.Lamp & Holder	Lamp holder	Protection Class	Size (mm)		Weight (Kgs)
						L	L1	
105502	2×18W	110V 60Hz	-	G13 (V10)	IP67	692	430	2.7
105502E			Ba15d24V 15W			692	430	2.72
105504	2×36W	220V 50Hz	-			1300	950	5.5
105504E			Ba15d24V 15W			1300	950	5.52

*Suitable for use with LED tubes